

**19" LCD Replacement for Pac-man Series Games  
SKU: 19LCDWG-CT (Cocktail Table)**



Congratulations on your purchase of our drop-in replacement monitor for Pac-man and Galaga series Cocktail Table games. They mount to the existing cabinet brackets and plug right into the original harness.

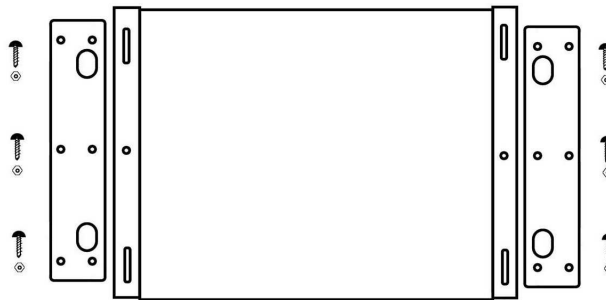
Features include:

- Industry leader, Wells-Gardner 19 inch display
- Industry Standard Inputs
- Control board makes adjusting easy
- Quality LED, LCD display
- Supports CGA (Standard) Resolution
- EGA (Medium) Resolution
- VGA Resolution
- No isolation transformer required
- Installation manual included

Tools needed for the project: Philips screwdriver  
Nut driver and/or socket set

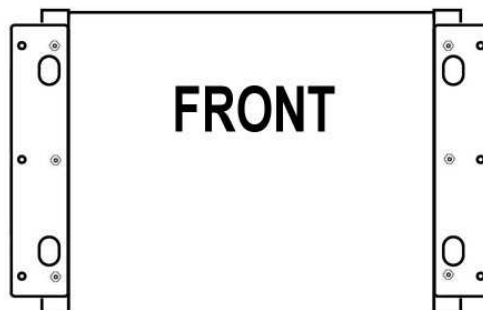
Verify you have all the included parts:

<u>Qty</u>	<u>Description</u>
1	Monitor
1	Power Supply and Cord
2	Extension rails
6	8-32 x ¾ inch machine screws
6	8-32 KEP nuts
1	This installation guide



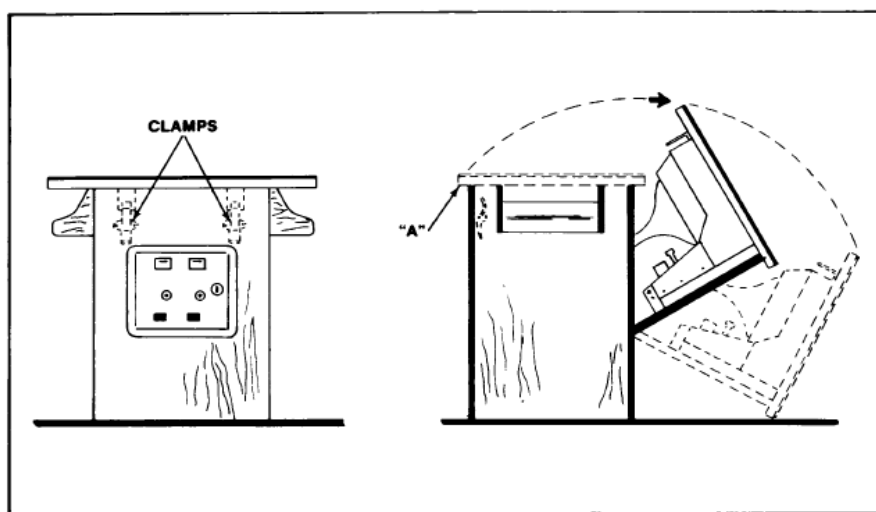
Assemble the monitor:

Fasten the wings with 3 small holes in front of the tabs on the monitor, put in screws from the front, through the extenders, then through the monitor bracket and fasten with the supplied 8-32 kep nuts.



Remove the old monitor. This procedure is also described in detail in the MIDWAY Ms. Pac-man Parts and Operating manual, Section 3, Maintenance and Repair.

## 1. OPENING THE TABLE DIAGRAM

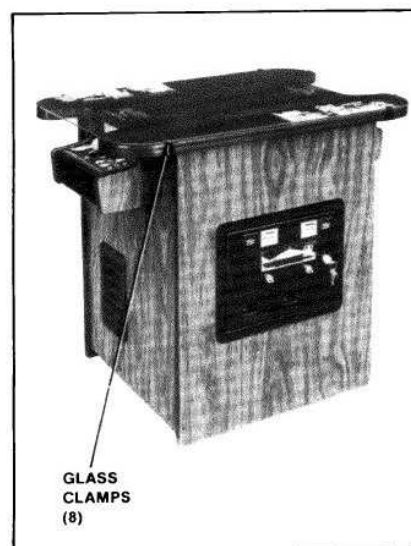


Opening Cocktail game

## 2. REMOVE THE MAIN DISPLAY GLASS AND THE T.V. BEZEL ASSEMBLY

NOTE: This may be done with the table top in the open or closed position. If you decide to open the table top, TURN THE POWER TO THE GAME OFF FIRST.

- Remove the screws which secure the table top glass clamps in place.
- Remove the table top glass.
- Remove the graphic underlay (artwork) if there is one.
- Lift out the T.V. bezel assembly.
- To reinstall the T.V. bezel assembly and the table top glass, reverse this procedure.



Removing top glass — Cocktail game

### 3. T.V. MONITOR REMOVAL

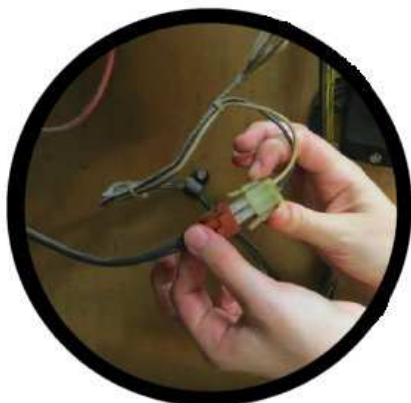
- **Turn power off to the game.**
- Open the coin box door and release the two latches as indicated in step 1 above.

**CAUTION:** The right hand latch is very close to the **HIGH VOLTAGE** on the monitor.

- Once the latches are released, unhook them from the latch plates.
- Grasp the table top at "A" and open it as indicated in step 1.

**CAUTION:** Due to the weight of the monitor, **EXTREME CARE MUST** be taken when opening the cabinet.

- Completely disconnect the T.V. monitor from all its cabling.  
**DON'T FORGET THE CHASSIS GROUND WIRE.**



Disconnect the 2 pin power connector to the old monitor.



Locate and disconnect the green and yellow wire ground strap (if attached to the monitor frame)

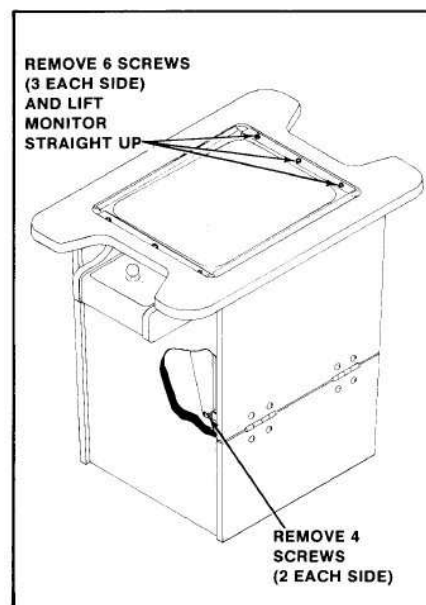


Locate and disconnect the video signal connectors.



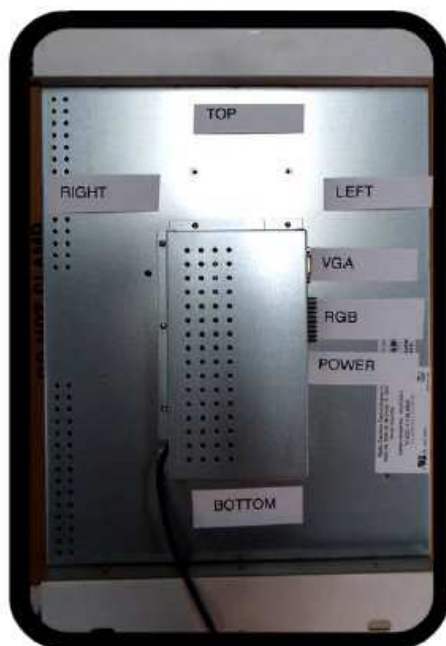
Photo: 3 and 6 pin video signal connectors disconnected.

- Remove the screws holding the T.V monitor chassis to the “L” by the door hinge(s).
- Close the Cocktail Table to and re-latch it.
- Remove the screws which secure the T.V. monitor mounting brackets to the edges of the slot cut in the table top.
- Pry up the end of each monitor mounting bracket with a screwdriver or similar tool until you can grasp them both.
- Lift the T.V monitor straight up and out of the table top being VERY CAREFUL not to bump the neck of the picture tube.
- To reinstall the T.V monitor, reverse this procedure.

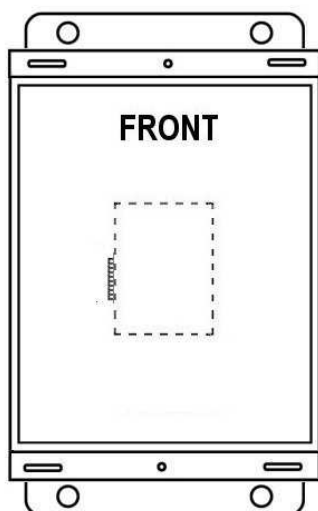


Removing monitor — Cocktail game

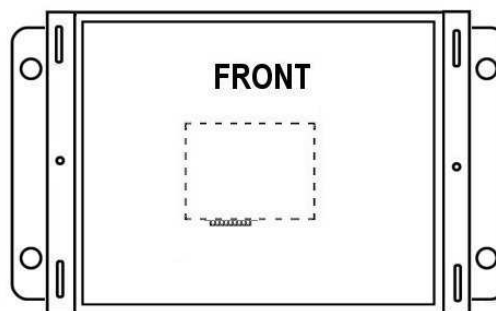
Check orientation of the monitor. In a vertical monitor application, orient the screen with the inputs located towards the left of the cabinet for most games, including Pac-man, Ms Pac, Galaga and Galaxian.



You will be using the Power, and RGB connections.  
Note the orientation of the connections.



**Vertical mount**



**Horizontal mount**

### Install new monitor

Reverse what you did above to install the new monitor, securing it to the table top. Then sliding it in through the back as when you removed it above. Then replace the 6 screws, securing it to the edges of the slot cut in the top.

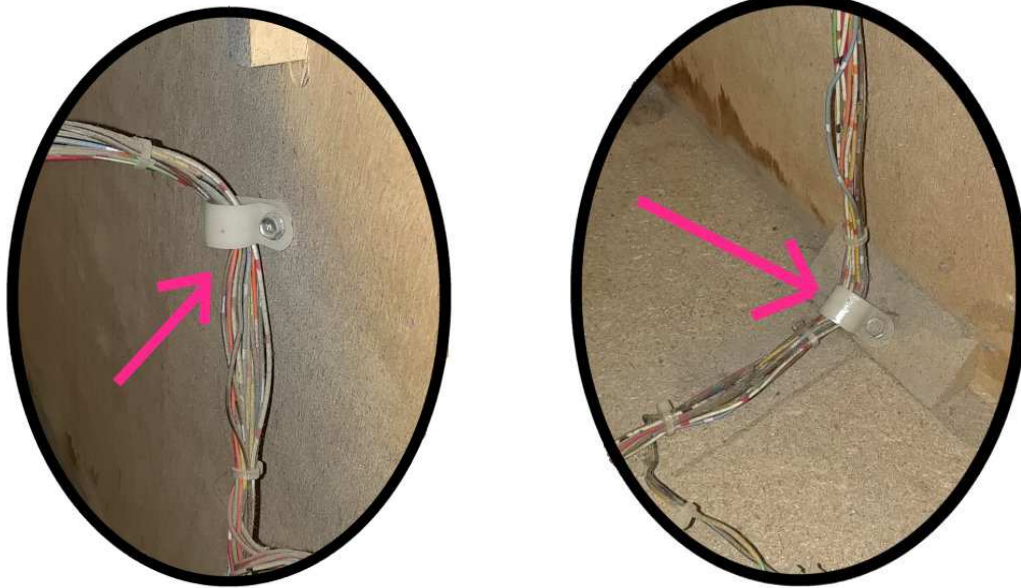
### Make the new connections:

- Plug the power supply into the back of the monitor as show below.
- Connect the original video signal wires as show below also.  
(If the video signal cable is not long enough, see the next step to gain some slack)
- Attach the power chord to the new square power supply.
- Plug the new power chord into the original cabinet monitor power connector.



Video signal and Power connections

If you need more slack in the video signal cable, remove the cable clamp securing the wires to the side and base of the cabinet. Then snip any cable ties needed to loosen the video signal wires from the bundle.



---

Install new cardboard monitor surround (optional)

Attach new monitor surround with double back tap to the front, outside frame of the monitor.

Replace tinted plexi if desired.

Replace top artwork and glass, securing them with the glass clips that were removed when removing the glass top.

Test installation

Plug in the cabinet to the wall

Power up the game

Test play the game